



CONSERVANCY
of Southwest Florida
OUR WATER, LAND, WILDLIFE, FUTURE.

Protecting Southwest Florida's unique natural environment and quality of life...now and forever.

CONSERVANCY OF SOUTHWEST FLORIDA

SOCIAL LINK:

[Facebook.com/ConservancySWF](https://www.facebook.com/ConservancySWF)

[Twitter.com/ConservancySWFL](https://twitter.com/ConservancySWFL)

ADDRESS:

1495 Smith Preserve Way

Naples, FL 34102

239.262.0304

www.conservancy.org



CONSERVANCY
of Southwest Florida
OUR WATER, LAND, WILDLIFE, FUTURE.

RLSA Myths vs. Reality

Aerial Support by Lighthawk

Myth 1: The RLSA is at risk of being developed as solid swath of 5-acre ranchettes



CONSERVANCY
of Southwest Florida
OUR WATER. LAND. WILDLIFE. FUTURE.



REALITY: Five-acre platted development is too costly and too difficult to permit.

“What person in their right mind would go out there and try to develop this stuff at one unit per five acres, and eventually platted subdivisions, knowing that they’re facing years and years of permitting and virtually no market for it, as compared to being able to get some credit for protecting that, and going and taking those rights and clustering them into a development pattern that’s proven to add value, be more cost effective, be more economically sound, who’s going to do that? If you do this right, nobody’s going to do the baseline conditions, that’s my point.”

~ Al Reynolds, Stantec (formerly WilsonMiller)



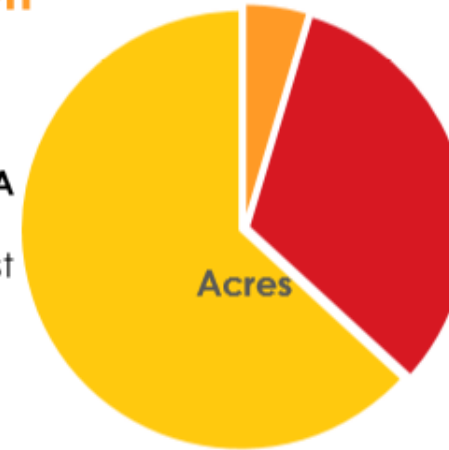
CONSERVANCY
of Southwest Florida
OUR WATER, LAND, WILDLIFE, FUTURE.

Myth 2:

50,000+ acres
of SSAs have
been placed in
conservation.

RLSA Conservation and Taxpayer Funded Conservation

Collier County RLSA
53,569 Acres
No Acquisition Cost
\$ 0 per acre
TEV: >\$1 B



Conservation Collier

4,054 Acres
\$ 103,898,698 Acquisition Cost
\$ 25,711 per acre
TEV annually: \$144,988,312
(as estimated by J. Beever, SWFRPC, July 2014)

Lee County Conservation 2020

28,978 Acres
\$ 349,863,323 Acquisition Cost
\$ 12,073 per acre

■ Conservation Collier ■ Conservation 2020 Lee County ■ RLSA

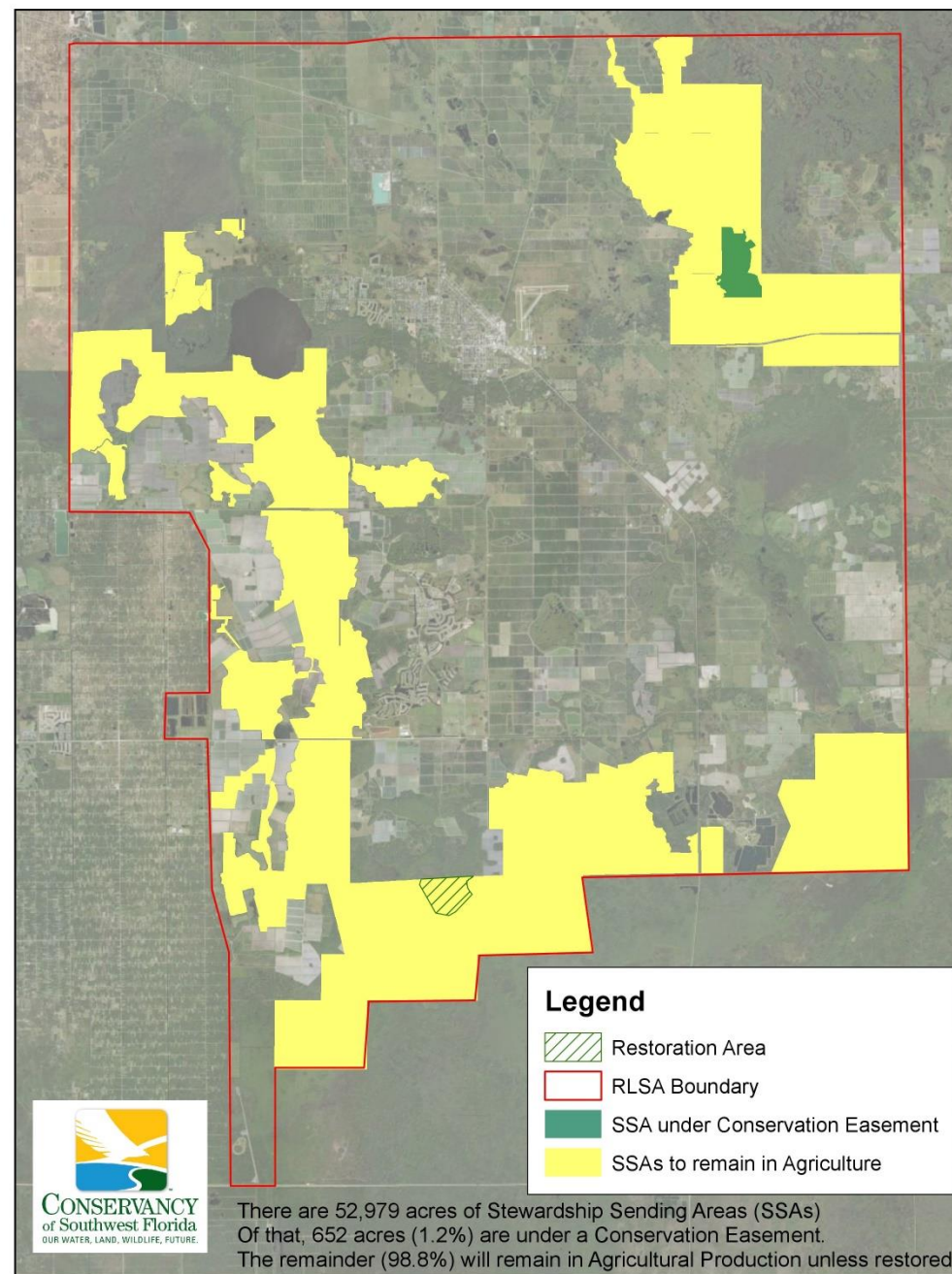
TEV is Total Ecosystem Service Value, a calculation of the economic benefits provided by native habitats.

- Purification of air and water
- Detoxification and decomposition of wastes
- Pollination of crops and natural vegetation
- Cycling and movement of nutrients
- Moderation of weather extremes and their impacts
- Provision of aesthetic beauty and intellectual stimulation that lift the human spirit



REALITY: Only
1% of SSA lands
have been
placed in
conservation.

Conservation & Agriculture Stewardship Sending Areas





CONSERVANCY
of Southwest Florida
OUR WATER, LAND, WILDLIFE, FUTURE.

Myth 3: Restoration is occurring in RLSA



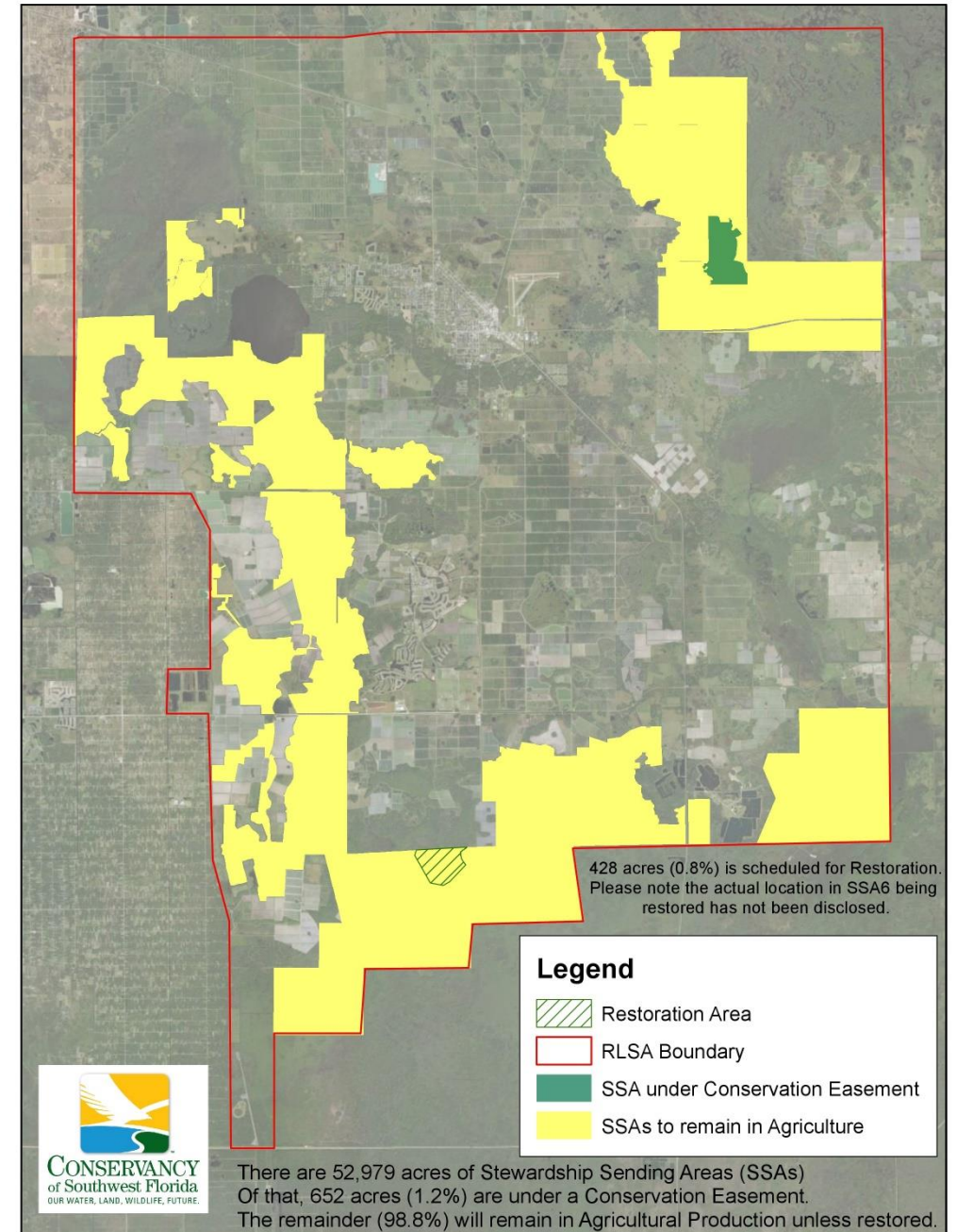
Photo: Old Florida Wetland Mitigation Bank



CONSERVANCY
of Southwest Florida
OUR WATER, LAND, WILDLIFE, FUTURE.

REALITY: Less than 1% of SSA lands have been restored.

Conservation, Agriculture & Restoration in SSAs





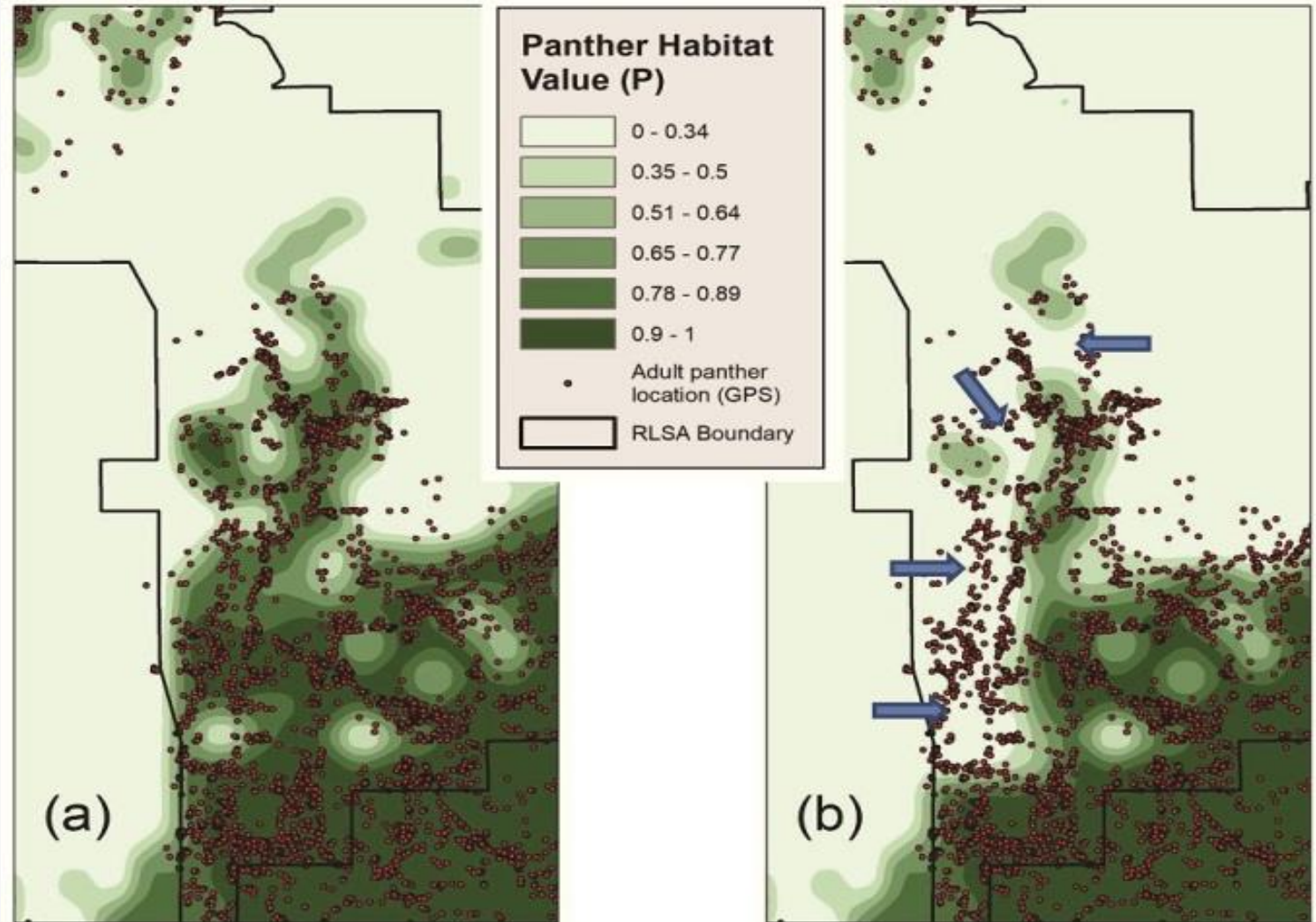
CONSERVANCY
of Southwest Florida
OUR WATER, LAND, WILDLIFE, FUTURE.

Myth 4:
Habitat
connectivity will
be retained and
enhanced



REALITY: Panther corridors will be narrowed and fragmented.

"Panther corridors will be severely fragmented, narrowed, and shortened as a result of HCP development." ~ Frakes (2018)



Frakes, Robert A. (2018, October 7). "Impacts to Panther Habitat from the Proposed Eastern Collier Multiple Species Habitat Conservation Plan: A Quantitative Analysis. Prepared for: Conservancy of Southwest Florida."

Myth 5:

The HCP will protect listed species.



©Linda Godwin



REALITY: The HCP development will gravely impact all listed species, not just the panther.

"The increased traffic volume, which would result from implementation of this HCP, poses a grave risk not only to the panther, but to most of the other Covered Species."

~ Dr. Reed Noss

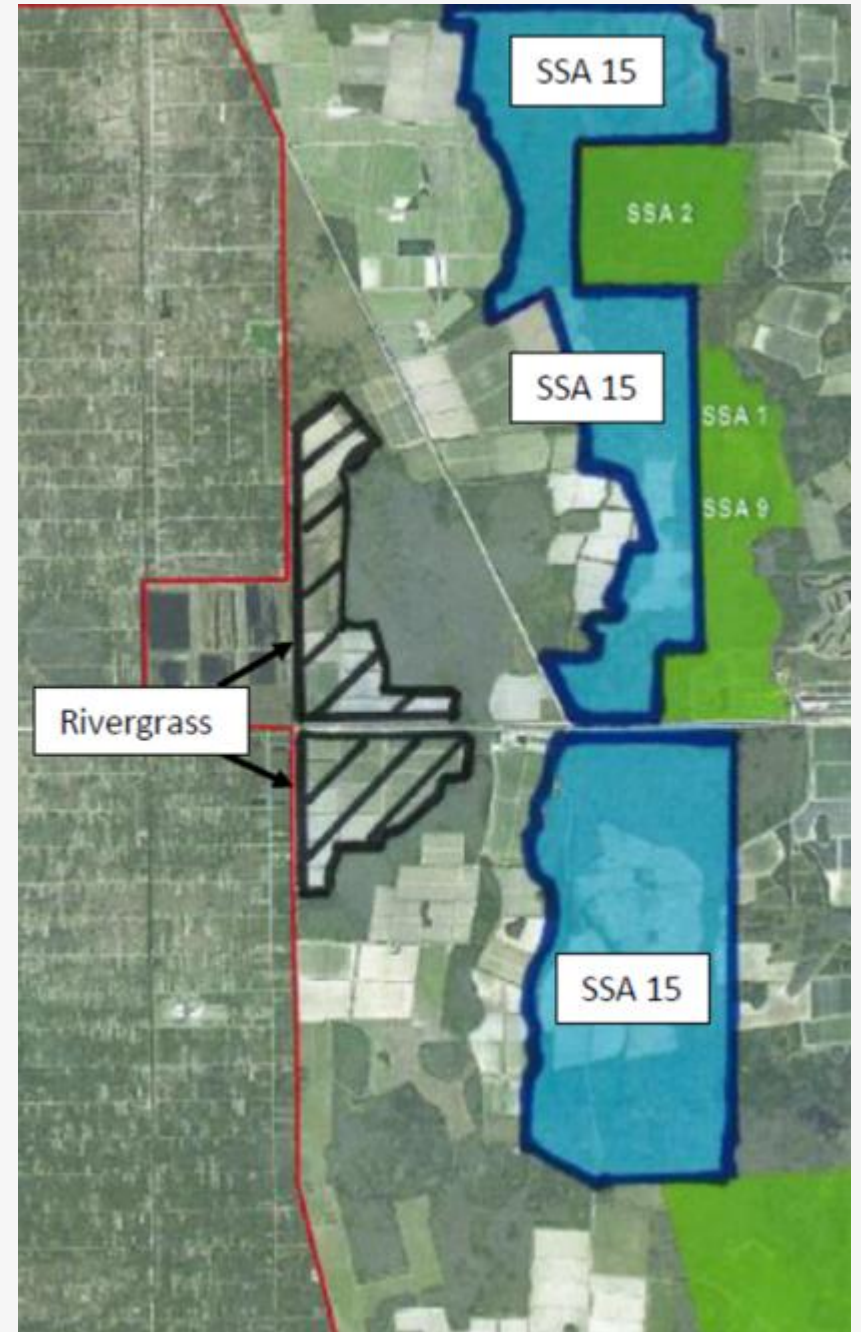




CONSERVANCY
of Southwest Florida
OUR WATER, LAND, WILDLIFE, FUTURE.

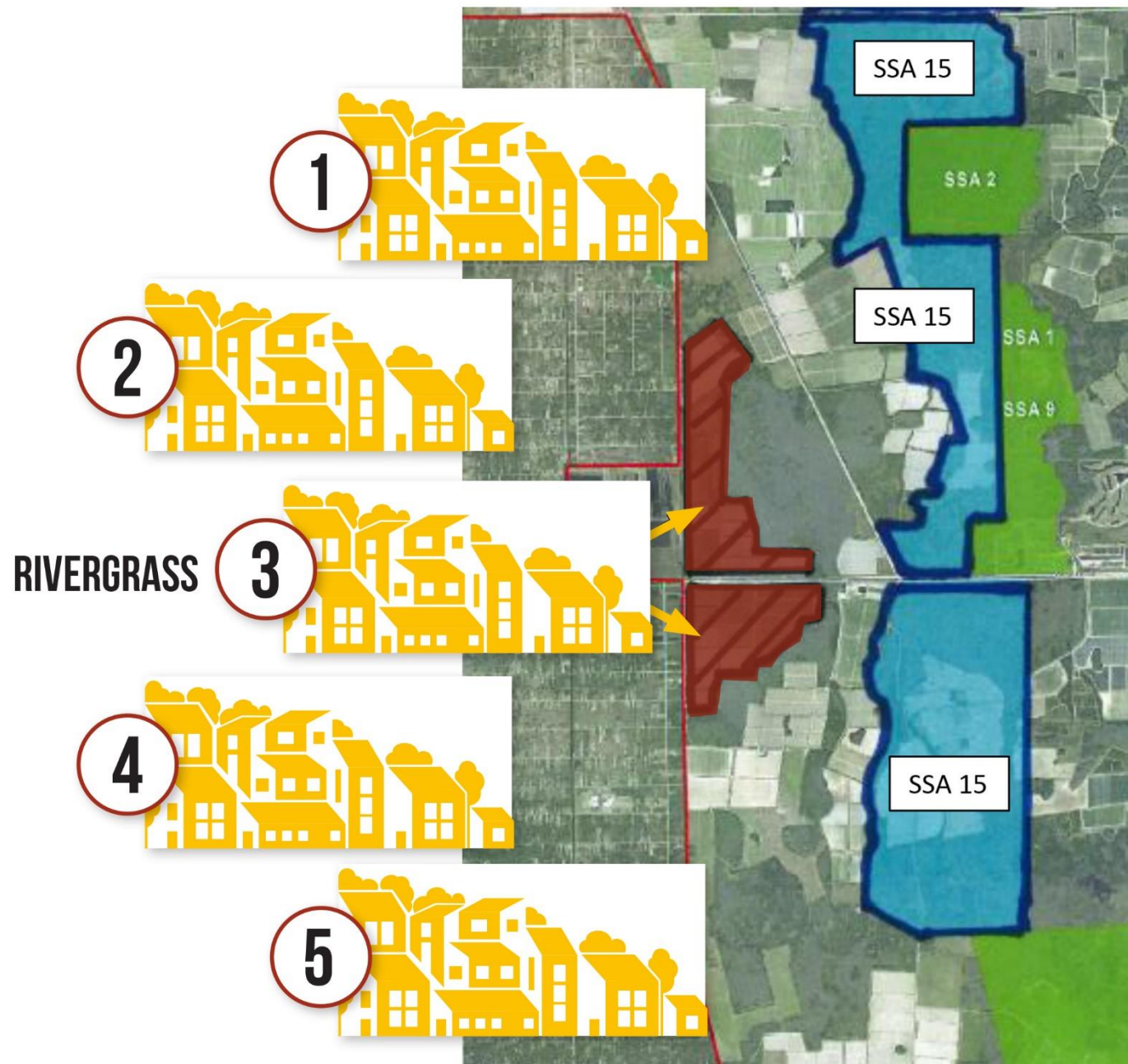
Myth 6:

5,000 acres of land was set aside as conservation in exchange for one Rivergrass Village.



REALITY:

5,000 acres of land was set aside as agricultural preservation which will pave the way for **FIVE** Rivergrass villages, not one.



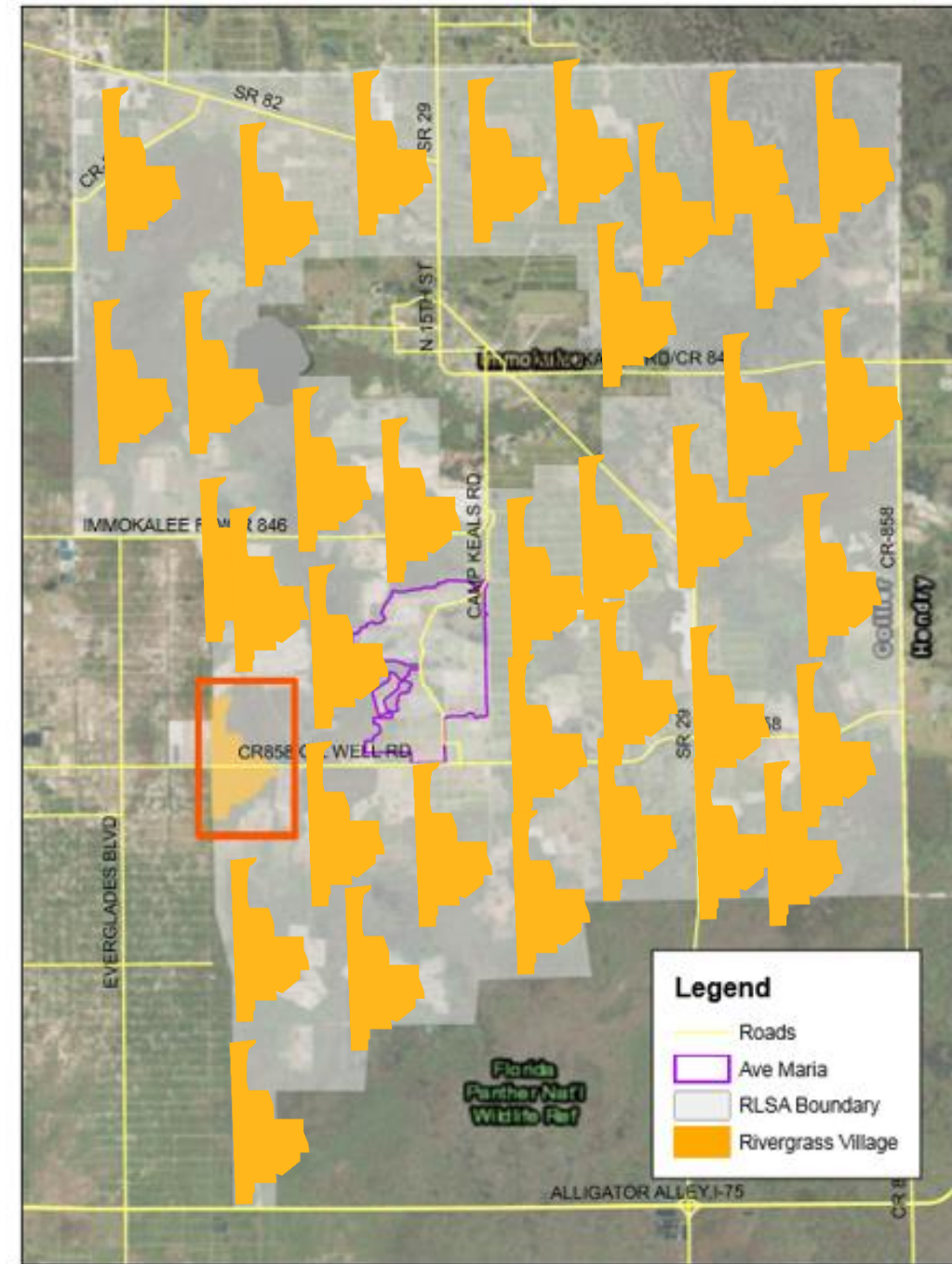


CONSERVANCY
of Southwest Florida
OUR WATER, LAND, WILDLIFE, FUTURE.

The RLSA needs to be fixed now:

Current credits
pending/approved =
37 Rivergrass Villages

The RLSA is
37/45th the way to the
45,000 acre cap





CONSERVANCY
of Southwest Florida
OUR WATER, LAND, WILDLIFE, FUTURE.

Protecting Southwest Florida's unique natural environment and quality of life...now and forever.



www.conservancy.org



(239) 262-0304



facebook.com/ConservancySWF



twitter.com/ConservancySWFL

ADDRESS

1495 Smith Preserve Way
Naples, FL 34134